

FOR SALE

5.14 Acres Development Land Blarney, Co. Cork



Residential Development Opportunity **5.14 Acres / 2.08 Ha Approx.**

Investment Highlights

- The lands comprise 5.14 Acres / 2.08 Ha of prime development land
- Strategically located in Blarney village with good access from the R617
- Zoned for residential development in the Blarney Macroom Local Area Plan 2017
- As of 2019, Blarney forms part of Cork City Council and will be governed by the Cork City Development Plan 2022 – 2028 once published
- Excellent access to local services, Cork city and the N20 to Limerick
- For sale by way of Private Treaty in 1 Lot

Contact

Peter O’Flynn
Email: peter.oflynn@cushwake.ie

Philip Horgan
Email: philip.horgan@cushwake.ie

Cushman & Wakefield
89/90 South Mall
Cork
Ireland
Tel: +353 (0)21 427 5454

5.14 Acres Development Land, Blarney, Co. Cork



Strategically located 5.14 Acre / 2.08 Ha residential development site



Zoned for residential development in the Blarney-Macroom LAP



Access to mains services & a wide variety of education, retail & medical amenities



5.14 Acre / 2.08 Ha site set in grass with direct access from the R617



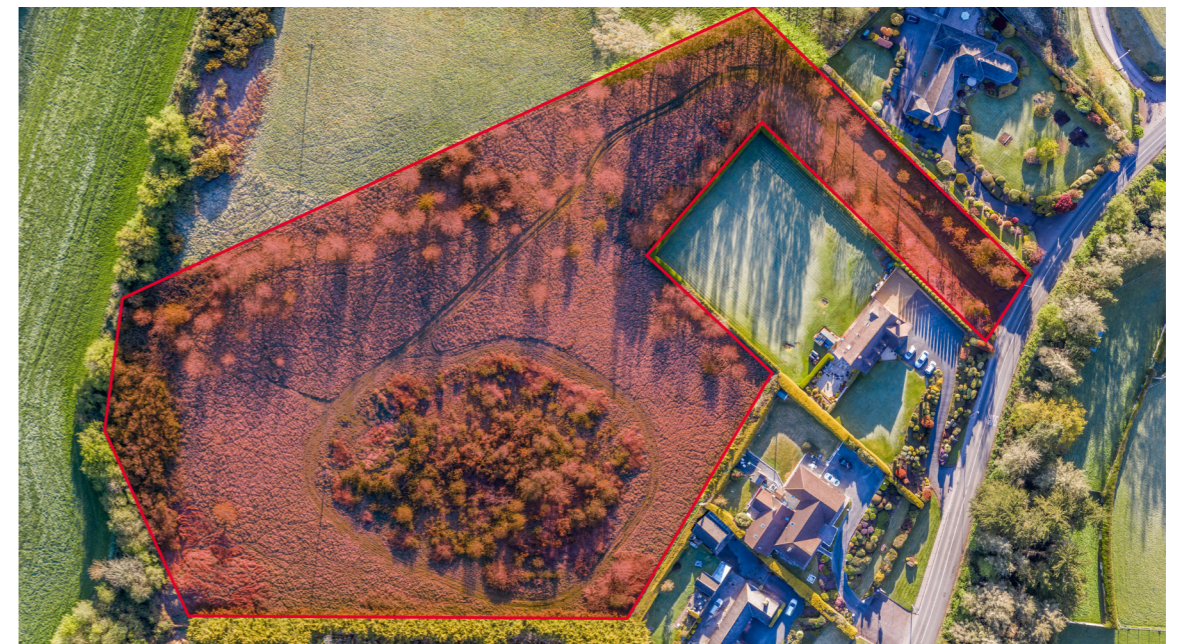
Blarney is home to Blarney Castle, Blarney Woollen Mills & Blarney Business Park

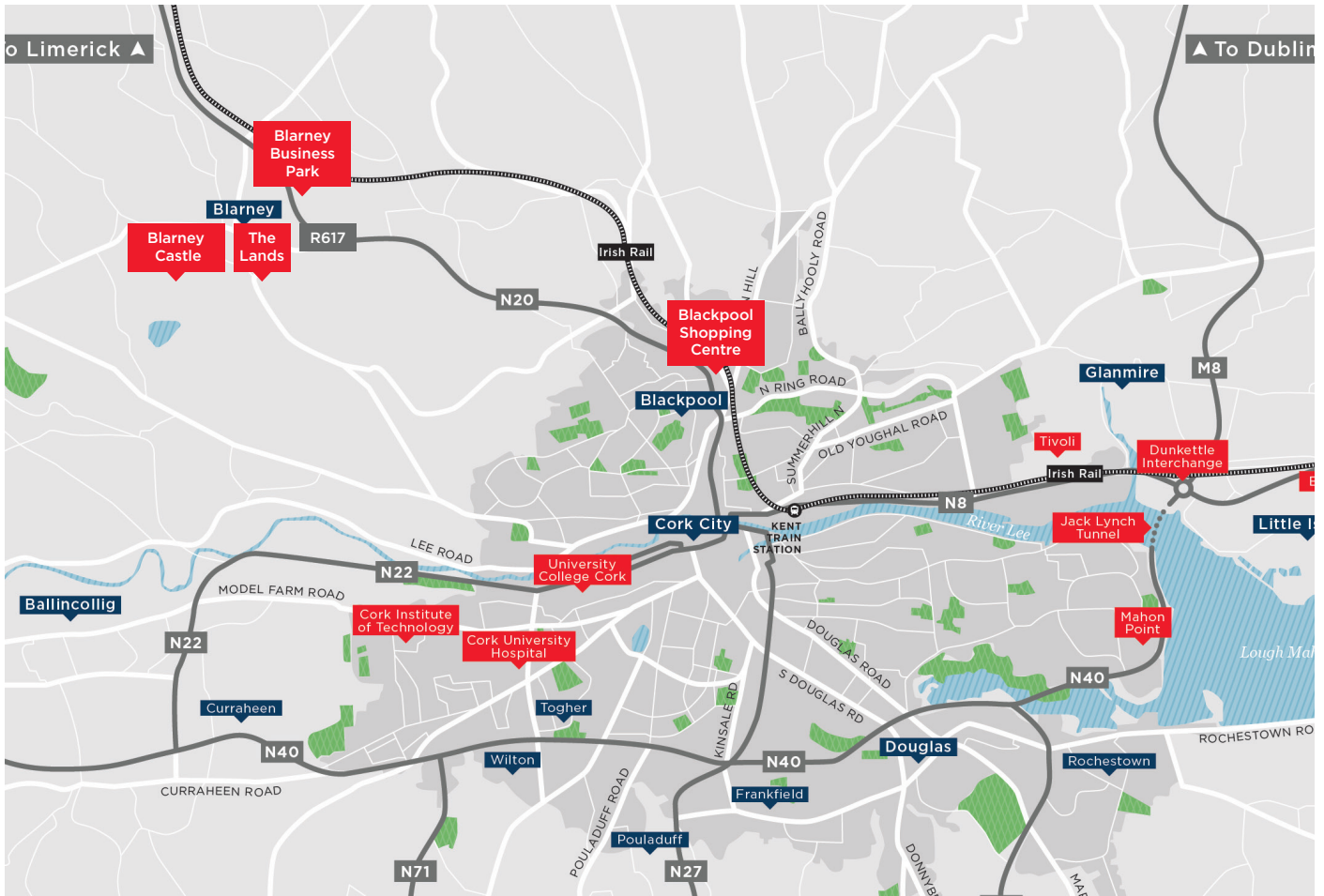


Prime suburban location close to Cork city centre, the M8 & N20 Limerick Road



The entire is held by way of a freehold title





For Sale

By Private Treaty

Guide Price & Viewing

Available upon request

Title

Freehold

Services

Access to mains services

BER details

Exempt

Contact

Peter O'Flynn
peter.oflynn@cushwake.ie
Tel: +353 (0)86 250 7944

Philip Horgan
philip.horgan@cushwake.ie
Tel: +353 (0)87 969 1018



Cushman & Wakefield
89/90 South Mall
Cork
Ireland
Tel: +353 (0)21 427 5454
Email: cork@cushwake.ie

[cushmanwakefield.ie](https://www.cushmanwakefield.ie)

A full copy of our general brochure conditions can be viewed on our website at <https://property.cushwake.ie/disclaimer>, or can be requested from your local Cushman & Wakefield office. We strongly recommend that you familiarise yourself with these general conditions. While care has been taken to ensure that information contained in Cushman & Wakefield publications is correct at the time of publication, changes in circumstances after the time of publication may impact on the accuracy of this information. PSRA Registration Number: 002607.